



**CITY OF
SPOKANE**

ENGINEERING SERVICES

2005 ANNUAL REPORT

May 1, 2006
Prepared by: Sandy Decker



DEPARTMENT OF
ENGINEERING SERVICES
808 W. SPOKANE FALLS BLVD.
SPOKANE, WASHINGTON 99201-3343
(509) 625-6700
FAX (509) 625-6349/(509) 625-6124
www.spokaneengineering.org

Departmental Mission Statement:

"Provide ***Excellence In Engineering*** and administrative support for the design and management of public works projects, both public and private"

In reflection upon 2005 and the information in this annual report, I am very proud of the professional services and extraordinary work this department provides on behalf of the Mayor, Council, and citizens of the City of Spokane.

More importantly, I would like to thank each and every employee for your dedication, hard work and can do attitude. Doing more with less is not a motto but a reality for Engineering Services. You **all** should be proud of the accomplishments highlighted in this report. We all know the tremendous coordination; both internally and externally, it takes to complete this work.

On behalf of our customers; Streets, Wastewater, Solid Waste, Water, Private Developers, Consulting Engineers, Contractors, and ultimately the citizens of Spokane; I would like to thank you for the confidence you place in Engineering Services and the work we do on your behalf. Without your support and cooperation, the projects shown in this report would not be a reality.

2006 is already proving to be a significant construction year (Est. \$25M + for public projects alone) and includes the first full year of implementation of the City of Spokane 2004 Street Bond Program.

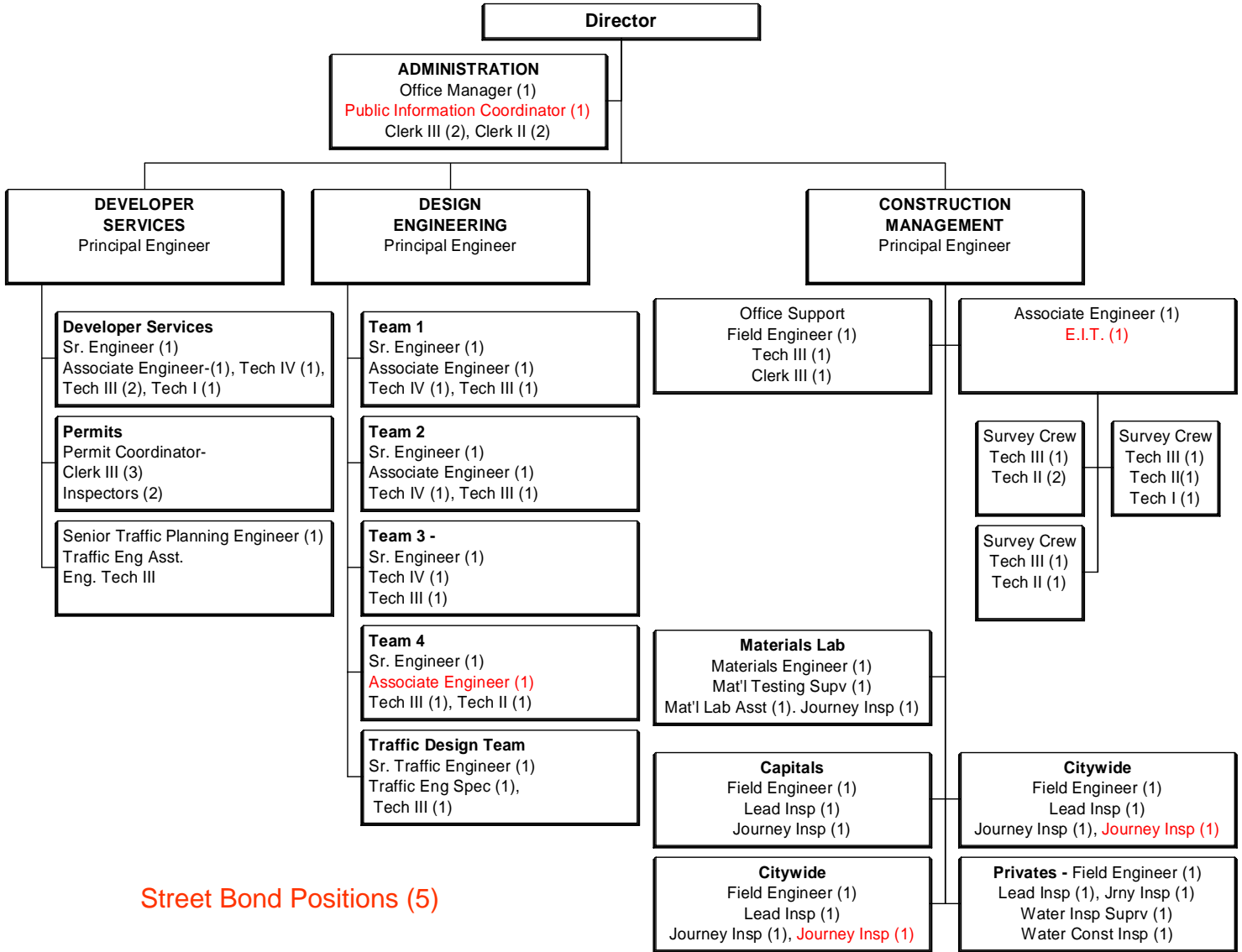
Remember, safety is our highest priority! I look forward to the successes of the coming year!

Sincerely,

A handwritten signature in cursive script, appearing to read "Thomas L. Arnold".

Thomas L. Arnold, P.E.
Director of Engineering Services

ENGINEERING SERVICES Organization Chart



INFRASTRUCTURE CONSTRUCTION DOLLARS

	2002-2004 Average	2005
Arterial Street Construction	\$4,201,711.14	\$16,705,863.47
Bridge Construction	\$3,608,862.46	\$13,735,682.96
Residential Street Construction	\$856,852.41	\$5,157,004.52
Residential Alley Construction	\$26,199.28	\$104,213.69
Sanitary Sewer Construction	\$3,042,980.57	\$3,864,088.33
Storm Sewer Construction	\$855,764.91	\$548,837.38
Water Construction	\$3,047,152.78	\$9,052,513.35
Sidewalk Construction and Repair	\$492,926.42	\$236,626.08
Miscellaneous	\$78,240.17	\$28,760.00
Total Construction Dollars	\$16,210,690.15	\$49,433,589.78

PUBLICLY FUNDED INFRASTRUCTURE CONSTRUCTION DOLLARS

	2002-2004 Average	2005
Arterial Street Construction	\$3,892,677.47	\$16,675,078.47
Bridge Construction	\$1,174,415.34	\$13,735,682.96
Residential Street Construction	\$856,852.41	\$395,987.07
Residential Alley Construction	\$26,199.28	\$102,213.69
Sanitary Sewer Construction	\$1,190,523.63	\$1,807,854.33
Storm Sewer Construction	\$347,075.45	\$0.00
Water Construction	\$1,163,604.71	\$6,021,988.35
Sidewalk Construction and Repair	\$492,926.42	\$236,626.08
Miscellaneous	\$78,240.17	\$0.00
City Funded Totals	\$9,222,514.89	\$38,975,430.95

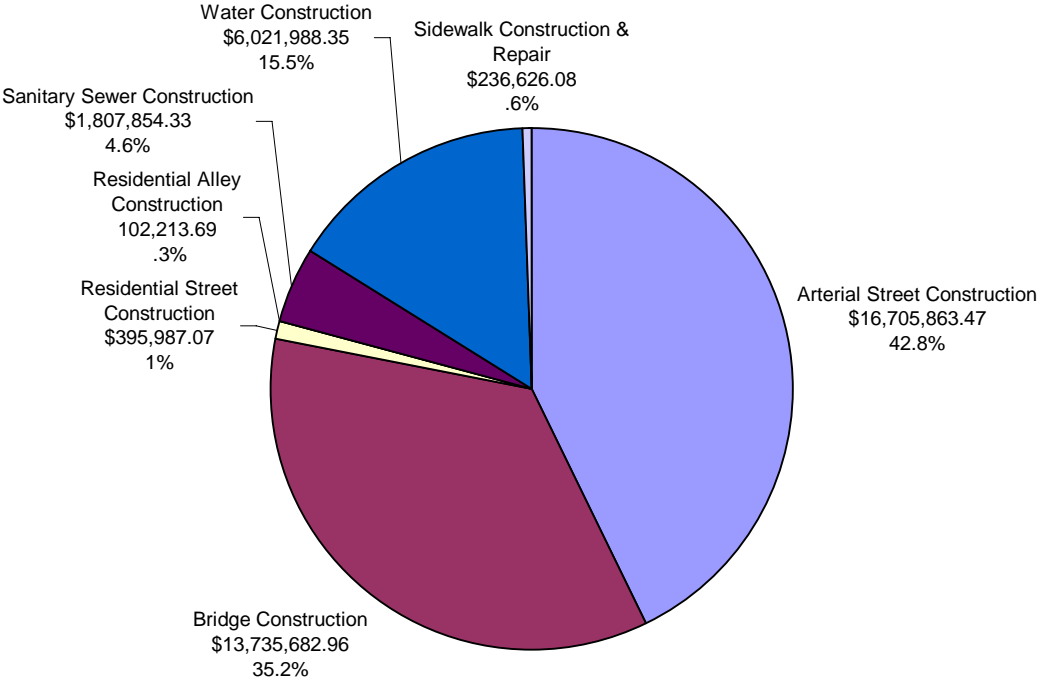
PRIVATELY FUNDED INFRASTRUCTURE CONSTRUCTION DOLLARS

	2002-2004 Average	2005
Arterial Street Construction	\$309,033.67	\$30,785.00
Bridge Construction	\$0.00	\$0.00
Residential Street Construction	\$2,434,447.12	\$4,761,017.45
Residential Alley Construction	\$0.00	\$2,000.00
Sanitary Sewer Construction	\$1,852,456.95	\$2,056,234.00
Storm Sewer Construction	\$508,689.46	\$548,837.38
Water Construction	\$1,883,548.07	\$3,030,525.00
Sidewalk Construction and Repair	\$0.00	\$0.00
Miscellaneous	\$0.00	\$28,760.00
Privately Funded Totals	\$6,988,175.26	\$10,458,158.83

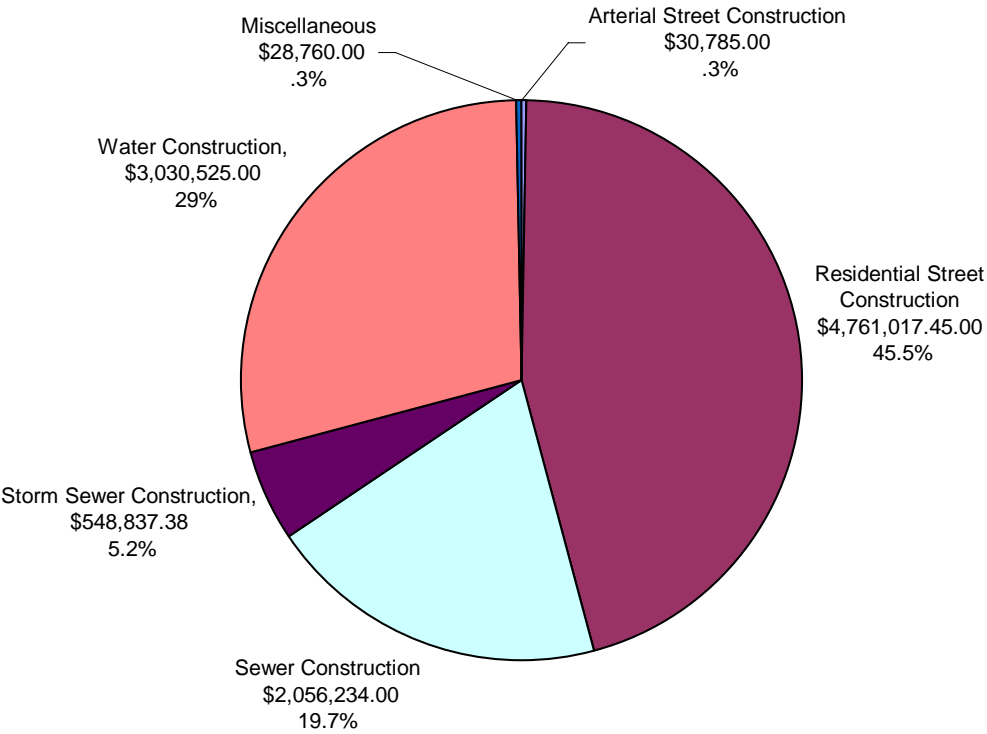
Comparison of City Versus Private Contracts

	2002-2004 Average	2005
City Contracts	\$9,222,514.89	\$38,975,430.95
Private Contracts	\$6,988,175.26	\$10,458,158.83

2005 Publicly Funded Infrastructure Construction Dollars - \$ 38,975,430.95



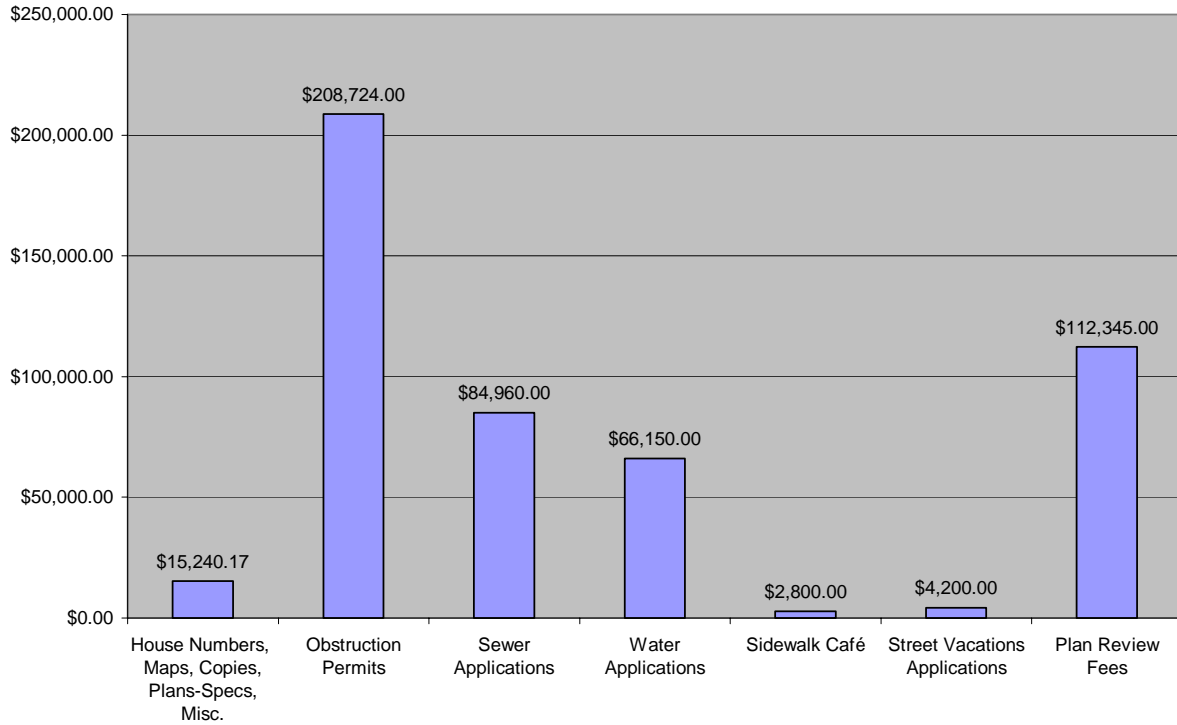
2005 Privately Funded Infrastructure Construction Dollars - \$10,458,158.83



Statistics

	<u>2004</u>	<u>2005</u>
<u>Streets:</u>		
Paved	933.0 miles	937.9 miles
Graded	35.7 miles	31.0 miles
Unimproved	42.9 miles	48.4 miles
Platted	1,011.6 miles	1017.3 miles
<u>Alleys:</u>		
Paved	88.4 miles	88.95 miles
Unimproved	110.1 miles	109.38 miles
<u>Sidewalks:</u>	1,188.6 miles	1212.2 miles
City of Spokane Area	59.07 sq miles	59.07 sq miles

2005 Permit and Plan Review Fees



Number of Permits

	2002-2004 <u>Average</u>	<u>2005</u>
Obstruction Permits:	2,411	2,354
Sewer Applications	1,810	2,549
Water Application	1,293	2,224
Sidewalk Cafés	12	16
Street Vacation Applications	9	14
Street Vacation Approved	7	8

2005 Projects of Interest

Capital Construction Project Completed

- Monroe Street Bridge Historic Rehabilitation
- Westside Transmission Main - 3rd Avenue from Division Street to Maple Street including paving as part of the 2003 Bond Program.
- First 2 projects from the 2004 Street Bond Program were completed. They are:
 - Maple Street and Ash Street from North of Wellesley Avenue to the City Limits
 - Greene Street from North of Mission Avenue to the Spokane River
- Thor/Freya Couplet from Hartson Avenue to Sprague Avenue
- Wellesley Avenue and A Street Roundabout



- Wellesley Avenue and A Street Roundabout

Projects Completed in 2005

	Project	Contractor	Cost	Funding Source
	<u>BRIDGE</u>			
2000122	Monroe Street Bridge Rehab	Wildish Standard Paving	\$13,735,682.96	CAP
		TOTAL	\$13,735,682.96	



ARTERIAL STREETS

2003162	3rd Avenue from Division Street to Maple Street – 2003 Street Bond	Eller Corporation	\$2,308,408.83	CAP
2003167	Crestline Street from Wellesley Avenue to Francis Avenue - 2003 Street Bond	Inland Asphalt Company	\$1,113,984.78	CAP
2005111	Freya Street at Francis Avenue Deceleration Lane - Food Services of America		\$30,785.00	PVT
2004174	Greene Street from 192 feet north of Mission Avenue to the Spokane River - 2004 Street Bond	Acme Concrete Paving, Inc.	\$1,550,385.33	CAP
2004172	Maple Street and Ash Street from 100 feet north of Wellesley to Cedar Road (north of City limits) - 2004 Street Bond	Inland Asphalt Company	\$2,507,685.17	CAP

LID=Local Improvement District, CAP = Public Capital Funds
 CD= Community Development Funds, PVT=Private Funds

	Project	Contractor	Cost	Funding Source
2000154	Regal Street from the south City limits to 38th Avenue	Murphy Brothers	\$2,860,294.29	CAP
2000155	Thor Street/Freya Street Couplet from Hartson Avenue to Sprague Avenue	Spokane Rock Products, Inc.	\$3,194,813.77	CAP
2003166	Washington/Stevens Street/8th Avenue from 14th Avenue to 3 rd Avenue	Half Moon Construction	\$2,374,861.68	CAP
99088	Wellesley Avenue and A Street Intersection	Spokane Rock Products, Inc.	\$764,644.62	CAP
		TOTAL	\$16,705,863.47	



Maple Street and Ash Street from North of Wellesley Avenue to the City Limits

RESIDENTIAL STREETS AND ALLEYS

2004130	Alley between 34th Avenue and 35th Avenue from Regal Street to 122 Feet East	Pounders Excavating	\$2,000.00	PVT
2003187	Alley between Crown Avenue and Queen Avenue from Helena Street to Pittsburg Street	Degerstrom Corporation	\$30,265.02	LID
2004046	Alley between Adams Street and Jefferson Street from Heroy Avenue to Princeton Avenue	Degerstrom Corporation	\$16,018.35	LID
2005085	Alley between Nora Avenue and Augusta Avenue from Ruby Street and Lidgerwood Street	Degerstrom Corporation	\$55,930.32	LID
2005109	01st Avenue at Sherman Street - North Side; Vacation Closure	Morris Piersol	\$16,450.00	PVT
2003045	13th Avenue from Cherry Street to Ash Street	Spokane Rock Products	\$59,949.43	LID

LID=Local Improvement District, CAP = Public Capital Funds
CD= Community Development Funds, PVT=Private Funds

	Project	Contractor	Cost	Funding Source
2003080	27th Avenue from Cuba Street to Havana Street and Cuba Street from 27th Avenue to 26th Avenue	Shamrock Paving	\$125,600.10	LID
2004167	Bluegrass 10th Addition Company	Inland Asphalt	\$164,000.00	PVT
2005107	Bluegrass 11th Addition	Inland Asphalt	\$282,000.00	PVT
97148	Canyon Bluffs	Vortex Construction	\$670,000.00	PVT
2003199	Cimarron PUD Products	Spokane Rock	\$394,000.00	PVT
2003050	Dalton Avenue from Stuart Street to Mayfair Street	Spokane Rock Products, Inc.	\$50,503.75	LID
2003140	Eagle Ridge 5th Addition PUD	K. C. Construction	\$1,209,000.00	PVT
2004122	Eagle Valley 2nd Addition	Murphy Brothers	\$82,007.00	PVT
2005055	Hoerner Avenue from Nevada Street west 300 feet		\$36,280.00	PVT
2003048	Ivory Street from 13th Avenue to 11th Avenue	Inland Asphalt	\$123,178.77	LID
2001051	Lyons Park - Streets	Poe Asphalt	\$1,409,600.00	PVT
2003184	Panorama Place Subdivision Company	Shamrock Paving	\$229,000.00	PVT
2005182	Schade Towers	Baker Construction	\$112,280.45	PVT
2003175	Sharp Avenue from Wall Street to Howard Street	Bacon Concrete, Inc.	\$36,755.02	LID
2005076	STA Park and Ride - Southeast Boulevard and 32nd Avenue	Murphy Brothers Inc.	\$6,400.00	PVT
2003087	Summerhill PUD Phase I	Inland Asphalt	\$150,000.00	PVT
		TOTAL	\$5,261,218.21	



13th Avenue from Cherry Street to Ash Street

LID=Local Improvement District, CAP = Public Capital Funds
 CD= Community Development Funds, PVT=Private Funds

	Project	Contractor	Cost	Funding Source
<u>SIDEWALK</u>				
2004177	2005 Community Development Sidewalk	William Winkler Company	\$156,377.38	CAP
2004088	2004 Utility Cut Program	Cameron Contracting, Inc.	\$80,248.70	CAP
		TOTAL	\$236,626.08	
<u>MISCELLANEOUS</u>				
2004111	Barnes Road from Indian Trail Road to Farmdale Street - Williams Pipeline Relay	Alaska Continental Pipeline	\$28,760.00	PVT
		TOTAL	\$28,760.00	
<u>SANITARY SEWER</u>				
97058	51st Avenue from Sta 41+90 to Ben Burr Road	Red Diamond	\$560.00	PVT
2004125	Big Sky Phase 2 (County project) (Thomas Mallen & Aero Roads)	Scott's Excavating	\$242,556.00	PVT
2005040	Big Sky Phase III 9700 W Hallett Road - County Project	Scott's Excavating	\$59,000.00	PVT
2004165	Bluegrass 10th Addition	Loshbaugh	\$49,000.00	PVT
2005105	Bluegrass 11th Addition	Loshbaugh	\$73,000.00	PVT
2004041	Brooke Meadow - Falcon Ridge	Mountain Crest	\$28,000.00	PVT
97146	Canyon Bluffs	Vortex Construction	\$327,571.00	PVT
2004187	Cimarron PUD 1st Addition	Scott's Excavation	\$94,000.00	PVT
2005185	Crystal Ridge PUD	Dour Construction	\$45,000.00	PVT
2003138	Eagle Ridge 5th Addition PUD Construction/ACI	K. C.	\$385,967.00	PVT
2000141	Falcon Ridge Transmission Sewer	Mountain Crest	\$230,598.00	PVT
2002145	Hogan Street Sewer Reline	Insituform Technologies Inc.	\$1,635,544.58	CAP
2001049	Lyons Park - Public Sewer Contractors	Continental	\$166,520.00	PVT
2001165	Marne Bridge Siphon Replacement	Red Diamond Construction	\$172,309.75	CAP
2003182	Panorama Place Subdivision	Chris's Excavation	\$42,000.00	PVT
2002056	Regal Street, 6212 South – Southwood Park Apartment Complex	Vortez Construction	\$22,650.00	PVT

LID=Local Improvement District, CAP = Public Capital Funds
CD= Community Development Funds, PVT=Private Funds

	Project	Contractor	Cost	Funding Source
2004171	Robinson Property Development	Pounders Excavation	\$11,305.00	PVT
2005137	Sekani at Cross Pointe 2nd Addition - 12th Avenue and Antelope Street	Mountain Crest Enterprises	\$140,901.00	PVT
2005113	Selkirk Lodge - Indian Trail Road and Barnes Road	Continent Contractors al	\$47,000.00	PVT
2004168	Spokane Veterans Home Addition - 222 East 5th Ave	Williams Construction	\$12,000.00	PVT
2004182	Valley View PUD	Vortex Construction	\$38,229.00	PVT
2004158	Walmart Supercenter Expansion - 9212 N Colton St		\$29,427.00	PVT
2005167	West Central Community Center - Sewer Relay	Vintage Construction	\$10,950.00	PVT
		TOTAL	\$3,864,088.33	

Marne Bridge Siphon Replacement During Construction



STORM SEWER

2003131	Barnes Road from Beech Land to Pamela Street	Continental Contractors	\$49,000.00	PVT
2004164	Bluegrass 10th Addition	Loshbaugh	\$41,000.00	PVT
2003116	Cedar Springs Estates - Lincoln Road, Martin Street, Napa Street	Hattenburg Excavation	\$38,000.00	PVT
2003196	Cimarron PUD	Mountain Crest	\$360.00	PVT
2004119	Eagle Valley 2nd Addition		\$20,441.00	PVT

LID=Local Improvement District, CAP = Public Capital Funds
 CD= Community Development Funds, PVT=Private Funds

	Project	Contractor	Cost	Funding Source
2001045	Lyons Park - Private Stormwater Contractors	Continental	\$54,000.00	PVT
2003181	Panorama Place Subdivision	Chris's Excavation	\$57,000.00	PVT
2003120	Park View PUD	Mountain Crest	\$26,000.00	PVT
2005181	Schade Towers	Baker Construction	\$38,352.38	PVT
2005112	Selkirk Lodge - Indian Trail Road and Barnes Road	Inland Asphalt Company	\$36,280.00	PVT
2003084	Summerhill PUD Phase I	Eller Corporation	\$38,000.00	PVT
2004157	Walmart Supercenter Expansion - 9212 N Colton St		\$150,404.00	PVT
		TOTAL	\$548,837.38	

WATER

2005110	14th Avenue from Cuba Street to Havana Street	Pounders Excavating	\$18,130.00	PVT
2004126	Big Sky Phase 2 (County project) (Thomas Mallen & Aero Roads)	Scott's Excavating	\$251,076.00	PVT
2005041	Big Sky Phase III 9700 W Hallett Road - County Project	Scott's Excavating	\$128,615.00	PVT
2004166	Bluegrass 10th Addition	Loshbaugh & Sons	\$58,896.00	PVT
2005106	Bluegrass 11th Addition Construction	Loshbaugh	\$79,223.00	PVT
2004042	Brooke Meadow - Falcon Ridge	Mountain Crest	\$61,643.00	PVT
2004188	Cimarron PUD 1st Addition	Scott's Excavating	\$107,408.00	PVT
99038	Cottage Homes at the Resort – Phase B	Gordon Wicker	\$77,385.00	PVT
2004121	Eagle Valley 2nd Addition	Murphy Brothers Inc.	\$38,623.00	PVT
2004190	Falcon Ridge - First Addtion, Dorset Road north of Strong Road	Mountain Crest Enterprises	\$185,807.00	PVT
2003158	Five Mile Heights Subdivision 3rd Addition Excavating	Loshbaugh	\$194,568.00	PVT
2002135	Government Way Transmission Main from Sunset Boulevard to Fort George Wright Drive	Red Diamond Construction	\$1,262,081.26	CAP
2005084	Hayford Road from McFarlane Road North 100 feet and McFarlane Road from 700 feet West of Hayford Road to Hayford Road	Castell Construction	\$62,850.00	PVT
2005062	Jesse's Bluff 2nd Addition (2500 W Hawthorne Rd)	C & B Excavating	\$221,243.00	PVT

LID=Local Improvement District, CAP = Public Capital Funds
CD= Community Development Funds, PVT=Private Funds

	Project	Contractor	Cost	Funding Source
2001082	Laurelhurst Place 2nd Addition			PVT
2001050	Lyons Park - Public Water	Continental Contractors	\$235,609.00	PVT
2005070	Mission Avenue at BNSF RR Crossing - Water Transmission Main Casing	Eller Corporation	\$92,201.02	CAP
2005047	Myrtle Street from 13th Avenue to 240 Feet south of 13th Avenue	Phoenix Development	\$14,559.00	PVT
2005166	Northview Estates	Eller Corporation	\$314,902.00	PVT
2003183	Panorama Place Subdivision	Chris's Excavating	\$72,496.00	PVT
2001085	Ponderosa Ridge	Continental Contractors	\$82,366.00	PVT
2005138	Sekani at Cross Pointe 2nd Addition - 12th Avenue and Antelope Street	Mountain Crest	\$230,624.00	PVT
2005102	SIA - Pilot Drive Extension to Taxi Lane - South Side	Graham Construction	\$13,942.00	PVT
2005072	Spokane International Airport - ATCT/TRANCON	Kewitt Construction	\$210,254.00	PVT
2001097	Tech Park Phase 1	Mountain Crest Enterprises	\$370,306.00	PVT
2004129	Waverly-Atlantic Water Main	Eller Corporation	\$280,051.99	CAP
2001171	Westside Transmission Main – Inland Empire Way to West Drive	K C Construction	\$1,856,631.41	CAP
2003162	Westside Transmission Main - 3rd Avenue from Division Street to Maple Street	Eller Corporation	\$2,531,022.67	CAP
		TOTAL	\$9,052,513.35	
	GRAND TOTAL		\$50,283,104.63	

LID=Local Improvement District, CAP = Public Capital Funds
CD= Community Development Funds, PVT=Private Funds

PROJECTS CONSTRUCTED PRIOR 2005 FINAL ACCEPTANCE IN 2005

Project	Cost	Funding Source
RESIDENTIAL STREET		
99092 Windsong 7th Addition	\$210,000.00	PVT
2000175 Panorama Estates	\$258,000.00	PVT
2002099 River Run PUD Phase I	\$406,000.00	PVT
98068 Rossmoor Ridge 1st Addition	\$201,600.00	PVT
2002059 07th/08th Avenues and McClellan Street - Sacred Heart West Wing	\$24,761.00	PVT
2001133 Woodridge View Estates	\$357,000.00	PVT
2003034 07th Avenue from "E" Street to Substitute Street	\$16,000.00	PVT
2003073 Crestview Estates First Addition	\$125,000.00	PVT
2002044 Adirondack Village	\$534,305.00	PVT
2004057 Ruby Street Improvements - Wendy's Hamburgers	\$24,315.00	PVT
2004098 Bluegrass 9th Addition	\$155,303.00	PVT
2000087 Westwood Hills 4th and 5th Additions	\$117,922.00	PVT
2003129 Summerhill Addition PUD Phase 1	\$487,000.00	PVT
2004093 Life Center River Run Campus	\$34,980.00	PVT
TOTAL	\$2,952,186.00	

SANITARY SEWER

98071 Cottage Homes at the Resort Manufactured Home Park	\$33,109.00	PVT
99052 Cedar Canyon Village	\$103,080.60	PVT
99137 Custer Street Sewer	\$42,455.00	PVT
2001147 27th Avenue from Cuba Street to Havana Street	\$8,840.00	PVT
2001131 Woodridge View Estates	\$94,000.00	PVT
2002064 51st Avenue, 3630 East - 48-unit Apartment (Rebecca Street & 51st Avenue)	\$26,346.78	PVT
2001096 Tech Park Phase I	\$250,000.00	PVT
2001150 Ivy Glen P.U.D. at 49th Avenue and Woodfield Lane	\$17,787.00	PVT
2001158 23rd Avenue from about 190 feet east of Myrtle Street to about 290 feet east of Myrtle Street	\$4,458.00	PVT
2000110 Woodland Terrace - Blocks 16 & 26	\$32,536.00	PVT
2002052 SIA Business Center - Windsor Drive and Sunset Highway	\$44,892.06	PVT

	Project	Cost	Funding Source
2002065	27th Avenue from about 25 feet east of eastline of Cuba Street to about 195 feet east of eastline of Cuba Street	\$7,221.96	PVT
99090	Windsong 7th Addition	\$41,370.24	PVT
2002073	Rockwood Forest Estates 5th Addition	\$60,673.38	PVT
2000085	Westwood Hills 4th and 5th Additions	\$98,649.00	PVT
2002086	Five Mile Heights 2nd Addition	\$152,133.00	PVT
2001046	Lyons Park - Private Sewer	\$202,400.00	PVT
2003078	Cincinnati Street from Springfield Avenue north 624 feet to Sta. 27+88	\$49,083.00	PVT
2002110	Custer Street from 14th Avenue to 13th Avenue and 13th Avenue from cul-de-sac west of vacated Lloyd Street to cul-de-sac east of Custer Street	\$47,318.00	PVT
2003053	Eagle Ridge PUD 4th Addition	\$135,937.00	PVT
2000160	Falcon Ridge	\$220,385.00	PVT
2003117	Cedar Springs Estates - Lincoln Road, Martin Street, Napa Street	\$32,231.00	PVT
2003090	Adirondack Lodge Phase 2	\$44,200.00	PVT
2002132	Eagle Ridge Boulevard (P.U.D.)	\$102,408.00	PVT
2002113	Pearl Meadow	\$4,180.00	PVT
TOTAL		\$1,855,694.02	

STORM SEWER

2001121	Public Safety Combined Training Facility Addition	\$2,650.00	PVT
98108	Windsong 7th Addition	\$86,576.86	PVT
2000194	Five Mile Heights 1st Addition	\$110,000.00	PVT
2001130	Woodridge View Estates	\$137,000.00	PVT
2002085	Five Mile Heights 2nd Addition	\$80,868.00	PVT
98065	Rossmoor Ridge 1st Addition	\$79,350.00	PVT
2002058	07th/08th Avenues and McClellan Street - Sacred Heart West Wing	\$6,190.00	PVT
2003052	Eagle Ridge PUD 4th Addition	\$76,329.00	PVT
2003089	Adirondack Lodge Phase 2	\$33,390.00	PVT
2004056	Ruby Street Improvements - Wendy's Hamburgers	\$18,300.00	PVT
2000088	Westwood Hills 4th and 5th Additions	\$20,706.00	PVT
2004033	Bluegrass 8th Addition	\$58,110.00	PVT
2003130	Summerhill Addition PUD Phase 1	\$122,000.00	PVT
2004095	Bluegrass 9th Addition	\$39,110.00	PVT
2004090	Life Center River Run Campus	\$67,080.00	PVT
2004052	McCarroll 2nd Addition	\$88,000.00	PVT
TOTAL		\$1,025,659.86	

	Project	Cost	Funding Source
WATER			
2002098	River Run PUD Phase I	\$166,859.00	PVT
2003111	Barnes Road from Beech Lane to Pamela Street - Water	\$117,305.00	PVT
2002133	Eagle Ridge Boulevard (P.U.D.)	\$79,779.00	PVT
2000135	Shawnee Canyon Estates	\$6,104.00	PVT
	TOTAL	\$370,047.00	
	GRAND TOTAL	\$6,203,586.88	