



CITY OF SPOKANE

ENGINEERING SERVICES

2004 ANNUAL REPORT

June 30, 2005
Prepared by: Sandy Decker



DEPARTMENT OF
ENGINEERING SERVICES
808 W. SPOKANE FALLS BLVD.
SPOKANE, WASHINGTON 99201-3343
(509) 625-6300
FAX (509) 625-6349/(509) 625-6124
www.spokaneengineering.org

In reflection upon 2004 and the information in this annual report, I am very proud of the services and work this department provides on behalf of the Mayor, Council, and citizens of the City of Spokane.

More importantly, I would like to thank each and every employee for your dedication, hard work and for stepping up in response to the increased workloads. There has been a tremendous team effort to accomplish the work highlighted in this report.

Thank you to our customers, Streets, Wastewater, Solid Waste, Water, Private Developers, Consulting Engineers, Contractors, and ultimately the citizens of Spokane, for the confidence you place in Engineering Services and the work we do. Without your support and cooperation, the projects shown in this report would not be a reality.

2005 is already proving to be a significant construction year (Est. \$30M +) and the start of construction for the City of Spokane 2004 Street Bond Program.

As we look to the year ahead, remember our Mission "Excellence in Engineering". I look forward to the successes of the year!

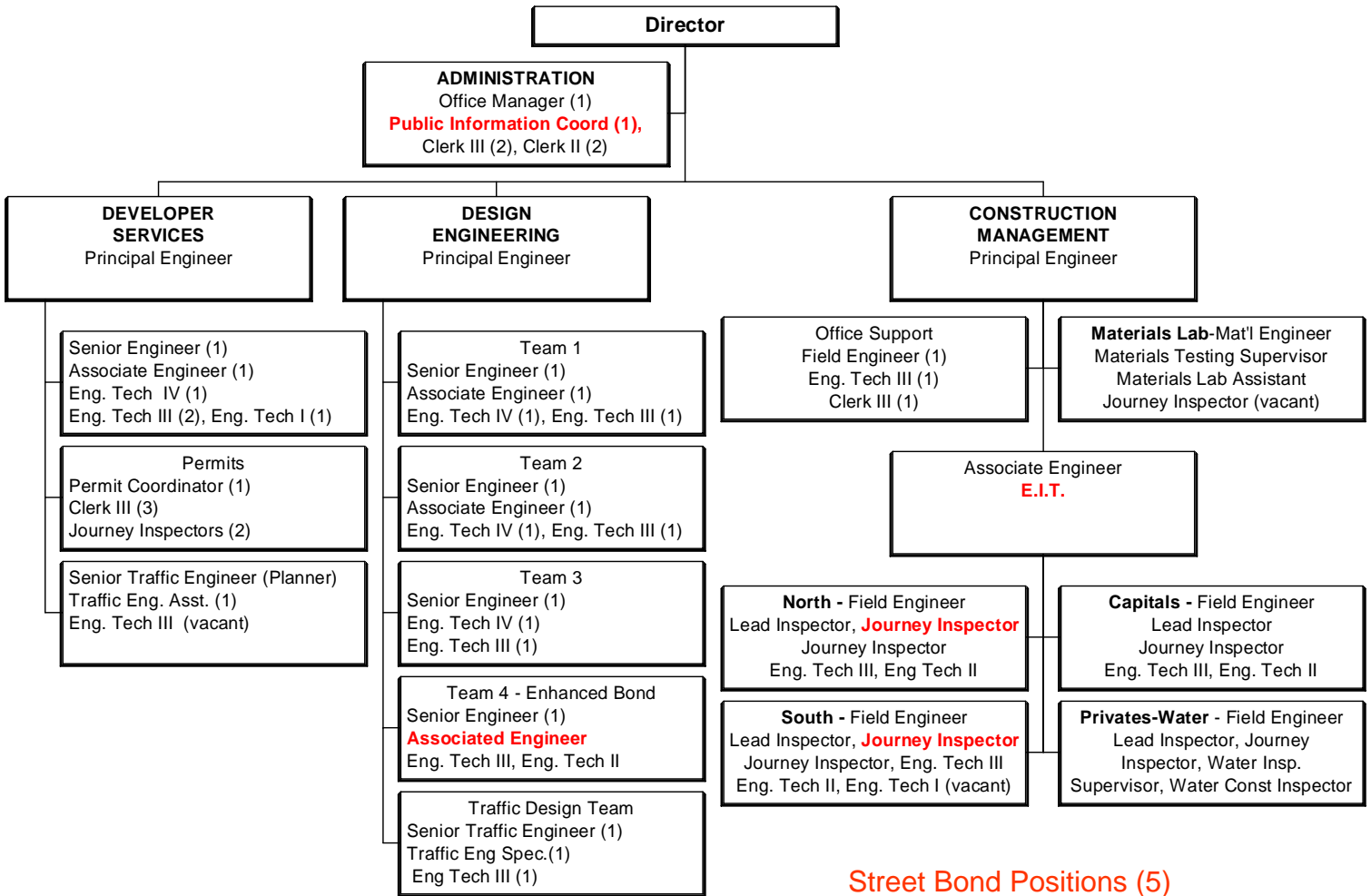
Sincerely,

A handwritten signature in blue ink, appearing to read "Thomas L. Arnold".

Thomas L. Arnold, P.E.
Director of Engineering Services

ENGINEERING SERVICES

Organization Chart



Street Bond Positions (5)

INFRASTRUCTURE CONSTRUCTION DOLLARS

	2001-2003 Average	2004
Arterial Street Construction	\$3,448,585.76	\$4,115,409.90
Bridge Construction	\$108,489.92	\$3,197,776.26
Residential Street Construction	\$2,640,704.86	\$4,915,095.77
Residential Alley Construction	\$466,638.84	\$15,942.44
Sanitary Sewer Construction	\$1,788,620.29	\$5,382,540.79
Storm Sewer Construction	\$1,285,911.50	\$1,259,163.96
Water Construction	\$2,970,835.47	\$3,956,953.33
Sidewalk Construction and Repair	\$578,434.07	\$410,419.34
Miscellaneous	\$206,391.60	\$0.00
Total Construction Dollars	\$13,494,612.32	\$23,253,301.79

PUBLICLY FUNDED INFRASTRUCTURE CONSTRUCTION DOLLARS

	2001-2003 Average	2004
Arterial Street Construction	\$3,053,856.42	\$4,115,409.90
Bridge Construction	\$108,489.92	\$3,197,776.26
Residential Street Construction	\$1,293,792.38	\$712,428.77
Residential Alley Construction	\$34,549.83	\$15,942.44
Sanitary Sewer Construction	\$600,235.62	\$2,155,065.79
Storm Sewer Construction	\$171,198.46	\$527,630.96
Water Construction	\$2,341,951.20	\$929,420.33
Sidewalk Construction and Repair	\$578,434.07	\$410,419.34
Miscellaneous	\$166,491.60	0.00
City Funded Totals	\$8,348,999.51	\$12,064,093.79

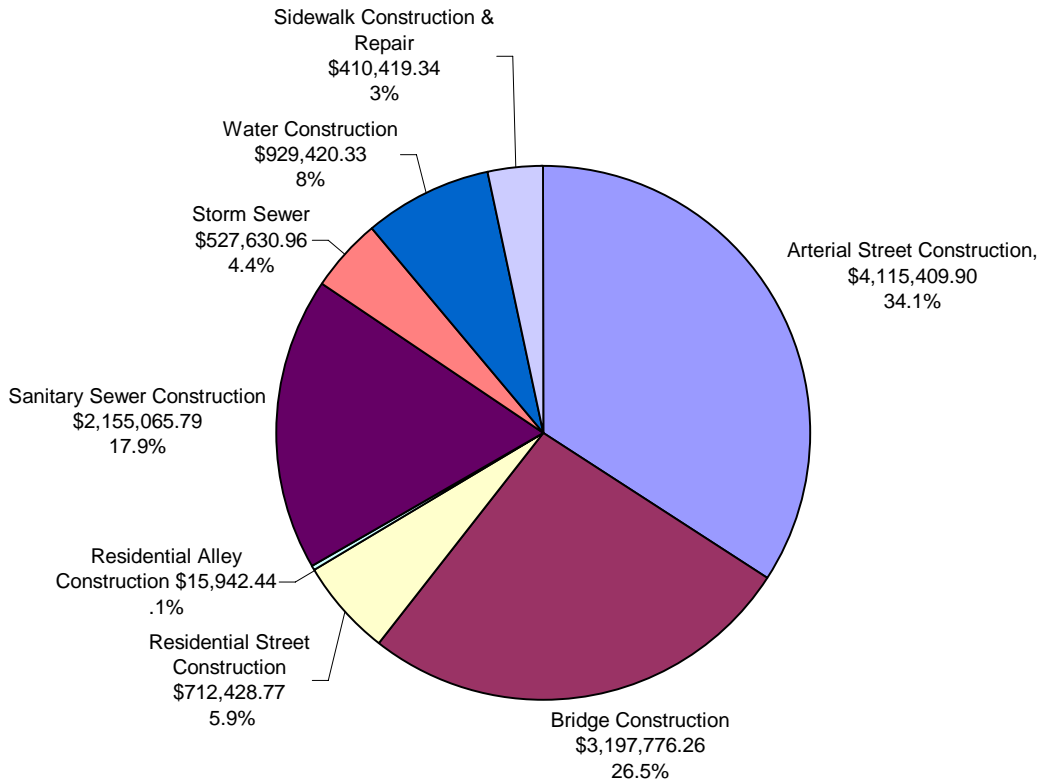
PRIVATELY FUNDED INFRASTRUCTURE CONSTRUCTION DOLLARS

	2001-2003 Average	2004
Arterial Street Construction	\$394,729.33	\$0.00
Residential Street Construction	\$1,346,912.48	\$4,202,667.00
Residential Alley Construction	\$1,724.27	\$0.00
Sanitary Sewer Construction	\$1,442,391.62	\$3,227,475.00
Storm Sewer Construction	\$416,700.43	\$731,533.00
Water Construction	\$1,503,254.68	\$3,027,533.00
Sidewalk Construction and Repair	\$0.00	\$0.00
Miscellaneous	\$39,900.00	\$0.00
Privately Funded Totals	\$5,145,612.81	\$11,189,208.00

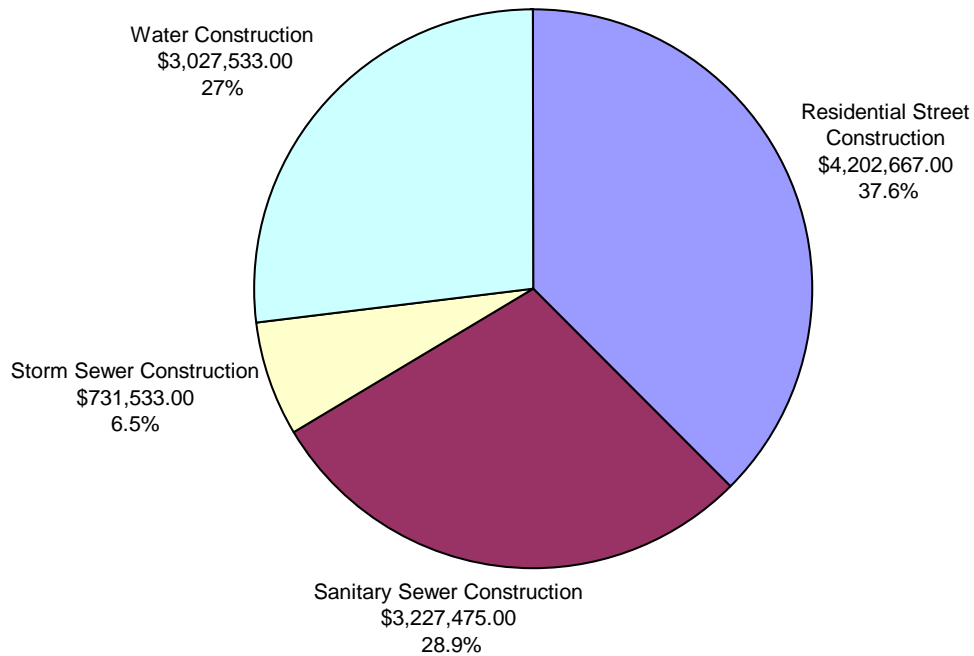
Comparision of City Versus Private Contracts

	2001-2003 Average	2004
City Contracts	\$8,348,999.51	\$12,064,093.79
Private Contracts	\$5,145,612.81	\$11,189,208.00

2004 Publicly Funded Infrastructure Construction Dollars - \$12,064,093.79



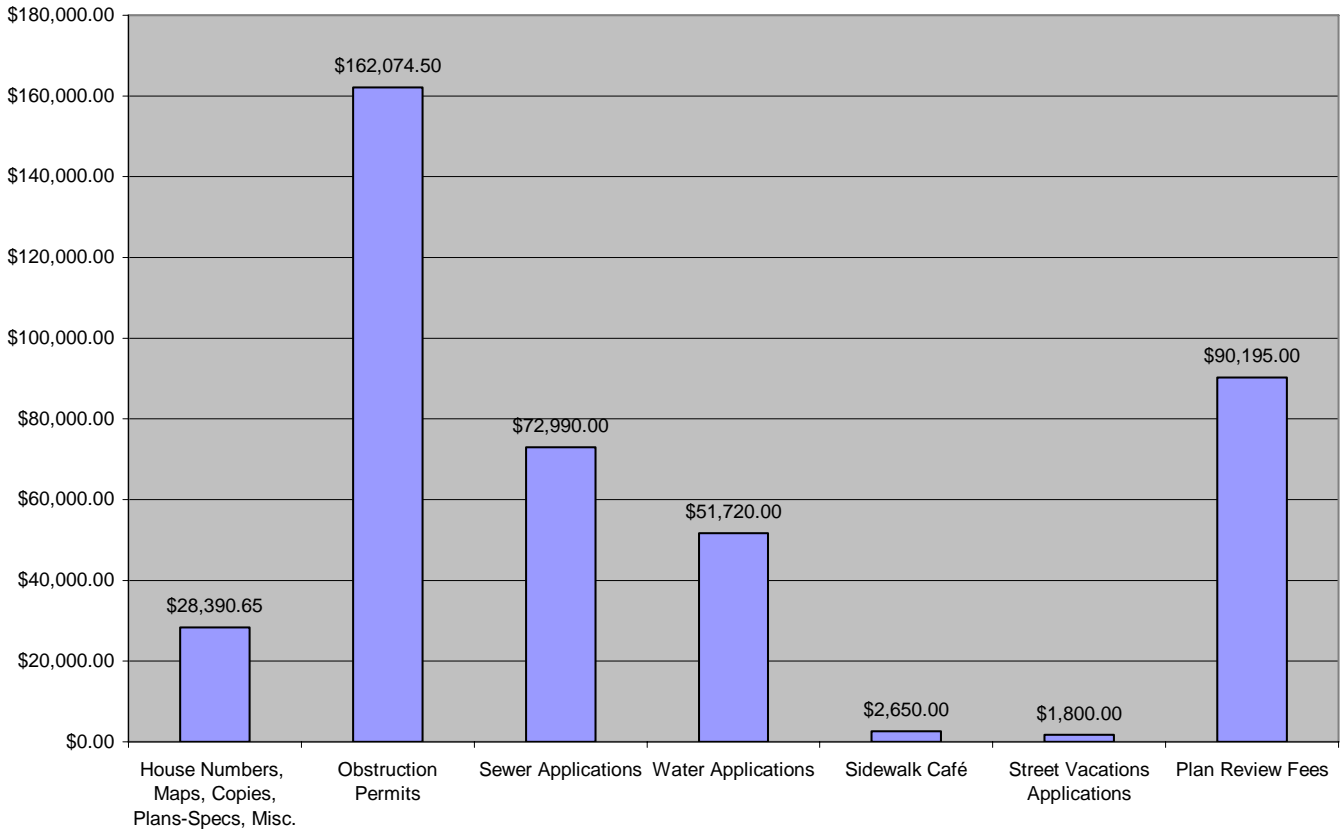
2004 Privately Funded Infrastructure Construction Dollars - \$11,189,208.00



Statistics

	<u>2003</u>	<u>2004</u>
<u>Streets:</u>		
Paved	933.0 miles	933.0 miles
Graded	37.8 miles	35.7 miles
Unimproved	35.8 miles	42.9 miles
Platted	1,006.1 miles	1,011.6 miles
 <u>Alleys:</u>		
Paved	80.2 miles	88.4 miles
Unimproved	118.5 miles	110.1 miles
 <u>Sidewalks:</u>		
	1,103.4 miles	1,188.6 miles
 City of Spokane Area	 58.65 sq. miles	 59.07 sq. miles

2004 Permit and Plan Review Fees



Number of Permits

	2001-2003 <u>Average</u>	<u>2004</u>
Obstruction Permits:	2,625	2,067
Sewer Applications	1,489	2,449
Water Application	986	1,744
Sidewalk Cafés	10	9
Street Vacation Applications	14	8
Street Vacation Approved	9	9

2004 Projects of Interest

Under Construction

- Monroe Street Bridge Historic Rehabilitation continues and is 74% complete with a contract amount \$12,900,000.

Capital Construction Project Completed

- Freya Way Bridge Rehabilitation.
- 2003 Street Bond Projects including Indian Trail Road, 5th Avenue and Stevens Street
- Freya Street from Sprague Avenue to Alki Avenue – Concrete Pavement
- Glennaire Lagoon Elimination & Bypass Sewer.



Freya Street from Sprague Avenue to Alki Avenue – Concrete Pavement

2004 Infrastructure Projects

ARTERIAL STREETS

	Project	Contractor	Cost	Funding Source
2004159	03rd Avenue and Washington Street	Sharp-Line Industries, Inc.	\$4,788.07	CAP
2003164	05th Avenue from Pittsburg Street to Freya Street - 2003 Street Bond	Shamrock Paving, Inc.	\$723,447.56	CAP
2003114	Division Street from 03rd Avenue to North River Drive - Durable Striping	Sharp-Line Industries, Inc.	\$30,271.15	CAP
2000151	Freya Street from Sprague Avenue to 400 feet north of Springfield Avenue	Acme Materials & Construction	\$1,881,184.78	CAP
2003163	Indian Trail Road from Francis Avenue to Kathleen Avenue - 2003 Street Bond	Inland Asphalt Company	\$1,216,654.30	CAP
2003115	Maple Street from 02nd Avenue to Boone Avenue - Durable Striping	SharpLine	\$23,007.65	CAP
2003165	Stevens Street from 03rd Avenue to Spokane Falls Boulevard - 2003 Street Bond	Spokane Rock Products Inc	\$236,056.39	CAP
TOTAL			\$4,115,409.90	

Stevens Street from 3rd Avenue to Spokane Falls Boulevard



BRIDGE

99184	Freya Way Bridge	Shea Graham Construction	\$3,197,776.26	CAP
TOTAL			\$3,197,776.26	



Freya Way Bridge Rehabilitation

RESIDENTIAL STREETS AND ALLEYS

98172	22nd Ave from approx. 300 feet west of Cuba St to Cuba St; 23rd Ave from Myrtle St to Cuba St; Cuba St from 22nd Ave to	Murphy Brothers	\$248,629.83	LID
2003051	Alley between 11th Avenue and 12th Avenue from Maple Street to Walnut Street	Shamrock Paving	\$15,942.44	LID
2002082	Adirondack Lodge at 44th Avenue		\$219,364.00	PVT
2003092	Adirondack Lodge Phase 2		\$45,252.00	PVT
2002044	Adirondack Village		\$469,010.00	PVT
2003132	Barnes Road from Beech Land to Pamela Street		\$196,000.00	PVT
2004036	Bluegrass 8th Addition		\$231,000.00	PVT
2003119	Cedar Springs Estates - Lincoln Road, Martin Street, Napa Street		\$154,000.00	PVT
2004068	Chimney Rock - South 2/3 of Cataldo Avenue from Ralph Street to Thor Street and Thor Street (strip) from Cataldo	Garco Construction	\$133,080.00	PVT

LID=Local Improvement District, CAP = Public Capital Funds
 CD= Community Development Funds, PVT=Private Funds

2002120	Cook Street from 08th Avenue to 07th Avenue; Smith Street from 08th Avenue to 06th Avenue; and 08th Avenue from	Inland Asphalt Company	\$286,321.84	LID
2002134	Eagle Ridge Boulevard (P.U.D.)		\$368,145.00	PVT
2003055	Eagle Ridge PUD 4th Addition	K.C. Construction	\$305,316.00	PVT
2003148	Eagle Ridge PUD 6th Addition		\$275,000.00	PVT
2004072	Eagle Valley 1st Addition	Murphy Brothers Inc.	\$89,000.00	PVT
2002088	Five Mile Heights 2nd Addition		\$391,000.00	PVT
2002121	Lacey Street from Hartson Avenue to 05th Avenue	Shamrock Paving Company	\$48,958.33	LID
2003046	Lee Street from South Riverton Avenue to Marshall Avenue	Shamrock Paving Company	\$66,865.78	LID
2004055	McCarroll 2nd Addition		\$351,000.00	PVT
2004040	River Run PUD 1st Addition	K. C. Construction	\$782,000.00	PVT
2004049	Southeast Boulevard Professional Center	Sharpline Inc.	\$12,500.00	PVT
2003047	Stone Street from South Riverton Avenue to Marshall Avenue	Shamrock Paving	\$61,652.99	LID
2004061	Summercrest 1st Addition		\$181,000.00	PVT

TOTAL \$4,931,038.21



Lacey Street from Hartson Avenue to 5th Avenue

LID=Local Improvement District, CAP = Public Capital Funds
 CD= Community Development Funds, PVT=Private Funds

SDWK

2004030	2004 Community Development Sidewalk Project	Cameron Contracting, Inc.	\$356,518.35	CDF
2002146	Thurston Avenue from Crestline Street to Regal Street	Bacon Concrete, Inc.	\$53,900.99	CAP
TOTAL			\$410,419.34	

SANSWR

2003104	26th Court - Sewer and Water		\$12,402.00	PVT
2004074	Academic Center WSU at Riverpoint H.E.C.		\$24,470.00	PVT
2002080	Adirondack Lodge at 44th Avenue		\$108,509.00	PVT
2002042	Adirondack Village		\$62,098.00	PVT
2000080	Austin/Cedar Roads Trunk Relay from Francis & Cannon Lift Station to Five Mile Road	Red Diamond Construction, Inc.	\$114,586.06	CAP
2004080	Big Sky Addition (County)	Scott's Excavating	\$324,971.00	PVT
2004034	Bluegrass 8th Addition		\$87,000.00	PVT
2004096	Bluegrass 9th Addition		\$47,000.00	PVT
2002144	Cedar Road Sewer Extension from Kensington Drive to Bradbury Drive	Red Diamond Construction, Inc.	\$164,683.89	CAP
2003135	Cedar Summit Estates, LLC		\$36,380.00	PVT
2003197	Cimarron PUD		\$151,000.00	PVT
2003150	Crapo Duplexes - 58th Avenue and Palouse Highway		\$14,722.00	PVT
2003071	Crestview Estates First Addition		\$35,000.00	PVT
2004043	Custer and Lloyd Street - Sewer		\$21,279.00	PVT

LID=Local Improvement District, CAP = Public Capital Funds
CD= Community Development Funds, PVT=Private Funds

2003146	Eagle Ridge PUD 6th Addition		\$103,000.00	PVT
2004070	Eagle Valley 1st Addition	Murphy Brothers Inc.	\$29,000.00	PVT
2003157	Five Mile Heights Subdivision 3rd Addition		\$158,000.00	PVT
2004131	Flightline Lane, 7211 West		\$14,802.00	PVT
2003174	General Store Private Sewer	H & R Construction	\$27,300.00	PVT
2000205	Glennaire Lagoon Elimination: Bypass	Eller Coporation	\$1,033,068	CAP
2004091	Life Center River Run Campus		\$37,565.00	PVT
2004053	McCarroll 2nd Addition		\$93,000.00	PVT
2003019	On-Site - Sewer		\$34,406.00	PVT
2003036	Overlook Heights	Lance Pounder	\$8,932.00	PVT
2003121	Park View PUD		\$29,000.00	PVT
2004133	Perry Street from Woodcliff Road to 300 feet south	Eller Corporation	\$7,000.00	PVT
95161	Regal Park - Phase 2	Murphy Brothers Inc.	\$37,442.00	PVT
2004038	River Run PUD 1st Addition	K. C. Construction	\$204,482.00	PVT
2001169	Rowan Trunk Rehabilitation	Insituform	\$842,727.84	CAP
2003124	Sekani at Cross Pointe		\$206,048.00	PVT
2000134	Shawnee Canyon Estates		\$78,960.00	PVT
2004044	SIA - FBO Ramp and Pilot Drive Extension North Side		\$154,080.00	PVT
2004085	Spokane Convention Center Bid 2		\$110,585.00	PVT

LID=Local Improvement District, CAP = Public Capital Funds
CD= Community Development Funds, PVT=Private Funds

2003185	Spokane International Airport Technology Park		\$110,983.00	PVT
2004059	Summercrest 1st Addition	Murphy Brothers Inc.	\$21,385.00	PVT
2003127	Summerhill Addition PUD Phase 1		\$67,000.00	PVT
2003085	Summerhill PUD Phase I		\$27,000.00	PVT
2003106	Summerhill PUD Phase II		\$246,000.00	PVT
2003189	Trestle Creek Apartments		\$114,789.00	PVT
2003160	Trickle Creek PUD		\$99,885.00	PVT
2004103	Upriver Drive Apartments (County)		\$79,000.00	PVT
2002078	West Plains Plaza - NE Corner of Hayford Road and P.S.H.No. 2		\$203,000.00	PVT
TOTAL			\$5,382,540.79	

STMSWR

2002041	Adirondack Village		\$43,873.00	PVT
99172	Cowley Creek Diversion	Eller Corporation	\$548,969.61	CAP
2003070	Crestview Estates First Addition		\$30,000.00	PVT
2003137	Eagle Ridge 5th Addition PUD		\$302,000.00	PVT
2003145	Eagle Ridge PUD 6th Addition		\$69,000.00	PVT
2004069	Eagle Valley 1st Addition	Murphy Brothers Inc.	\$22,000.00	PVT
2004037	River Run PUD 1st Addition	K. C. Construction	\$196,000.00	PVT
2002142	Sylvia Court Flood Control	Red Diamond Construction	\$527,630.96	CAP

LID=Local Improvement District, CAP = Public Capital Funds
CD= Community Development Funds, PVT=Private Funds

2004058	Summercrest 1st Addition		\$45,000.00	PVT
2004082	Summit Boulevard Overflow Reroute	Wesslen Construction	\$23,660.00	PVT
TOTAL			\$1,259,163.96	

WATER

98150	14th Avenue and Grand Boulevard - Elevate Standpipe	Morse Construction Group	\$777,102.83	CAP
2003057	23rd Avenue from 295 feet West of Center Line of Myrtle Street to 233 feet East of Myrtle Street Water Main Extension	Vortex Construction	\$24,914.00	PVT
2004128	Aero Road Water		\$26,751.00	PVT
2004081	Big Sky Addition (County)		\$32,557.00	PVT
2004035	Bluegrass 8th Addition		\$99,806.00	PVT
2004097	Bluegrass 9th Addition		\$52,310.00	PVT
97147	Canyon Bluffs		\$266,359.00	PVT
2003136	Cedar Summit Estates, LLC		\$13,797.00	PVT
2003198	Cimarron PUD		\$182,291.00	PVT
2003072	Crestview Estates First Addition Enterprises	Mountain Crest	\$55,734.00	PVT
2004117	Dowdy Road Water Line (County) Geiger Boulevard to Electric Avenue		\$56,082.00	PVT
2003139	Eagle Ridge 5th Addition PUD		\$153,803.00	PVT
2004079	Eagle Ridge Home Site		\$3,623.00	PVT
2003054	Eagle Ridge PUD 4th Addition	K, C. Construction	\$123,463.00	PVT

LID=Local Improvement District, CAP = Public Capital Funds
CD= Community Development Funds, PVT=Private Funds

2003147	Eagle Ridge PUD 6th Addition		\$122,536.00	PVT
2003064	Eagle Ridge PUD Phase II		\$209,637.00	PVT
2004071	Eagle Valley 1st Addition	Murphy Brothers Inc.	\$29,927.00	PVT
2003126	Hawthorne Road from Dorset Road to Five Mile Road Water Transmission Main	Red Diamond Construction	\$152,317.50	CAP
2004054	McCarroll 2nd Addition		\$129,485.00	PVT
2003112	Northview Estates - Preliminary Plat		\$250,632.00	PVT
2004134	Perry Street from Woodcliff Road to 300 feet south		\$11,266.00	PVT
2004039	River Run PUD 1st Addition		\$164,424.00	PVT
2003125	Sekani at Cross Pointe		\$192,019.00	PVT
2004045	SIA - FBO Ramp and Pilot Drive Extension - North Side	Murphy Brothers Inc.	\$71,020.00	PVT
2004107	SIA Baggage Explosive Detection - 9000 W. Airport Dr.	Morris Piersol	\$15,633.00	PVT
2004178	Spokane Convention Center		\$25,907.00	PVT
2003186	Spokane International Airport Technology Park		\$96,133.00	PVT
2004060	Summercrest 1st Addition	Murphy Brothers Inc.	\$52,211.00	PVT
2003128	Summerhill Addition PUD Phase 1		\$16,874.00	PVT
2003107	Summerhill PUD Phase II		\$12,100.00	PVT
2003161	Trickle Creek PUD	Murphy Brothers Inc.	\$21,639.00	PVT
2002079	West Plains Plaza - NE Corner of Hayford Road and P.S.H.No. 2	Mountain Crest	\$62,736.00	PVT
2004063	West Terrace 3rd PUD		\$279,069.00	PVT

LID=Local Improvement District, CAP = Public Capital Funds
CD= Community Development Funds, PVT=Private Funds

2001132 Woodridge View Estates

C & B Excavating

\$172,795.00 PVT

TOTAL

\$3,956,953.33

Grand Total

\$23,253,301.79



14th Avenue and Grand Boulevard - Elevate Standpipe